



Time Tested • Time Proven

856061-00 09-19

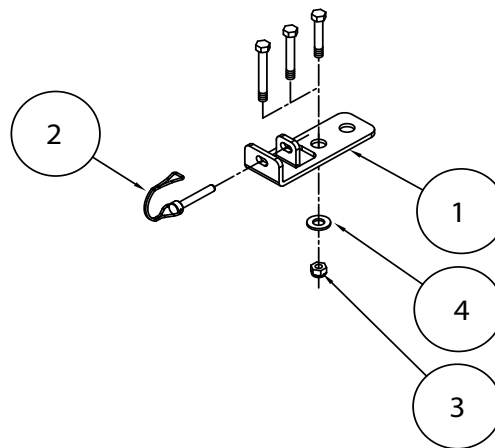
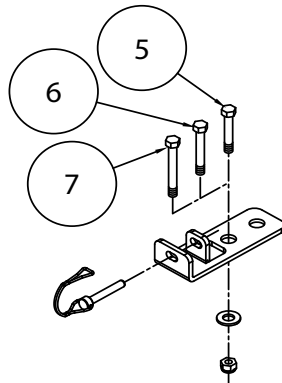
Tow Defender Shoulder Bolt Adapters

part number 4750-375

Assembly Instructions

All specifications are subject to change without notice.

ROADMASTER, Inc. 6110 NE 127th Ave. Vancouver, WA 98682 800-669-9690 Fax: 360-735-9300 www.roadmasterinc.com



Item	Qty	Description	Part #
1	2	Shoulder bolt adapter	B-001574A
2	2	Safety pin	356997-00
3	2	1/2" nylon lock nut	350259-00
4	2	1/2" flat washer	350308-00

Item	Qty	Description	Part #
5	2	1/2" x 2 1/2" bolt	350099-00
6	2	1/2" x 3" bolt	350101-00
7	2	1/2" x 3 1/2" bolt	350103-00

Before you begin...

- This kit is written with the assumption that the Tow Defender has already been installed on the tow bar. If it is not, please install it on your tow bar before proceeding.

The last page of these instructions includes a full parts explosion of the Tow Defender 4750, for reference only. This page includes a parts explosion for this kit's components.

Assembly and connection instructions

1. Remove the shoulder bolts from both tow bar collars (Figure 1), paying particular attention to the sequence of washers and/or spacers in the collars – you will reinsert the washers and/or spacers in the next step.



WARNING

Discard the original shoulder bolts. They will not be long enough once the adapters are added. The bolts may break while towing, which will result in the separation of the towed vehicle.

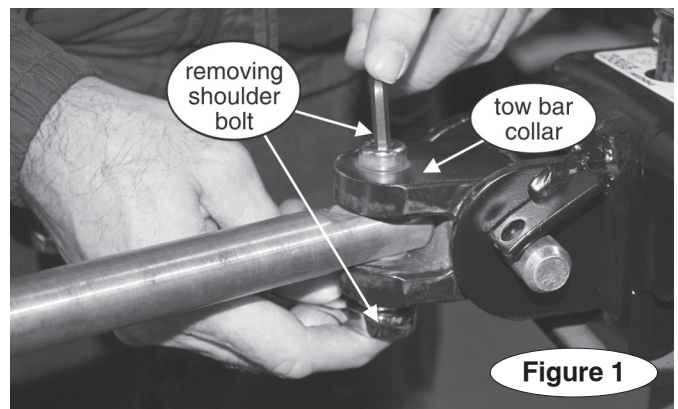


Figure 1

2. Attach the new shoulder bolt adapters (Figure 2, next page) – There are three pairs of shoulder bolts included with this kit, to accommodate various brands of tow bars. They are 2 1/2", 3" and 3 1/2" lengths. Use the bolts that will allow at least two or three threads to protrude through the lock nut once reassembled.

continue on next page

With the collar washers and/or spacers back in place, insert the new shoulder bolts through the collars and through the hole at the front of the shoulder bolt adapters, as shown in Figure 2.

Do not tighten the lock nuts until this kit has been fully installed.

3. Connect the car-side support tubes – first, bring the loose end of the Tow Defender fabric over the tow bar and align the cross tube with the shoulder bolt adapters.

Note: If necessary for proper adjustment, use the center hole in the shoulder bolt adapter for correct spacing.

You may need to change which flap is removed from the cross tube, depending upon the width of the crossbar arms (Figure 3).

Note: the majority of Blue Ox and Demco tow bars will use the narrow setting; the majority of ROADMASTER tow bars will use the wide setting.

4. Insert the cross tubes and pin them into place as shown in Figure 4.

Note: The support tubes have pre-drilled holes at 24 and 28.5 inches for this purpose. If the width of your baseplate arms requires it, you must drill new holes in the support tube to match.

CAUTION

If, while towing, the safety pins are not locked in place (as shown in Figure 4), the Tow Defender will separate from the towed vehicle, which may cause significant damage to the towed vehicle or the Tow Defender.

5. IMPORTANT! The last adjustment you make must be as follows: slide the Tow Defender collar bracket (as shown on the last page, item #6) so that the Tow Defender screen appears taut.

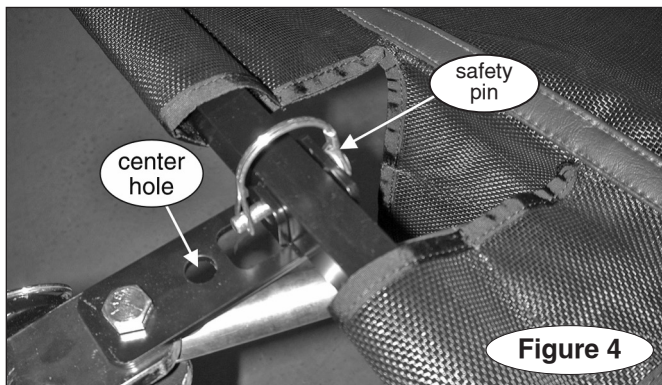
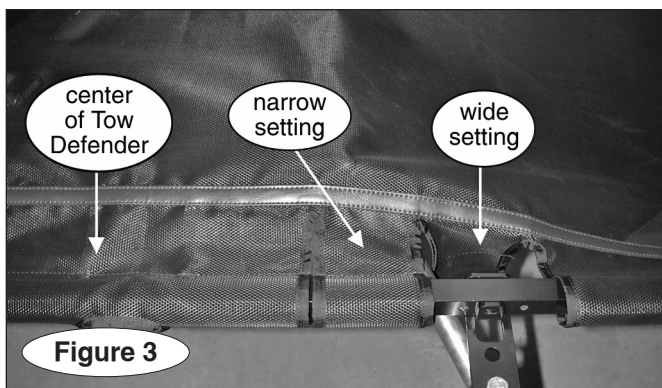
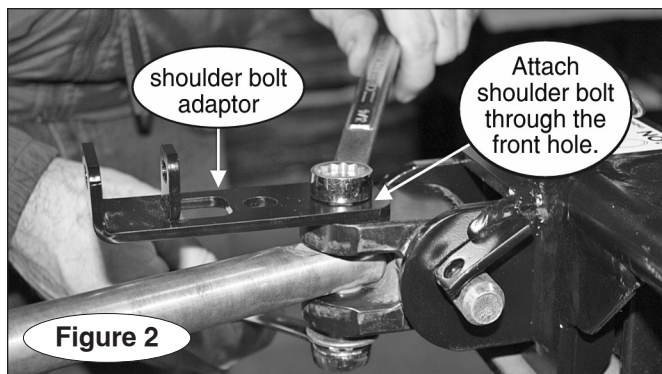
Now slide the collar bracket back one inch toward the towed vehicle. **This slack is necessary for sharp turns.** If the fabric is too taut, over time the fabric will fail and tear at the seams.

CAUTION

Failure to leave enough slack in the screen will cause the fabric to tear and is not covered by warranty.

With the collar assembly in the correct position, tighten the adjustment bolt at the bottom of the collar bracket (as shown on the last page, item #6) with a 9/16" wrench until the collar is fixed in place, then secure the jam nut. **Tighten the new shoulder bolts and Nylock nuts to secure the shoulder bolt adapters.**

6. When not in use, the Tow Defender may be stored at the rear of the motorhome – remove the safety pins and roll the support tubes and screen toward the motorhome. Secure using the Velcro straps that came with your Tow Defender.

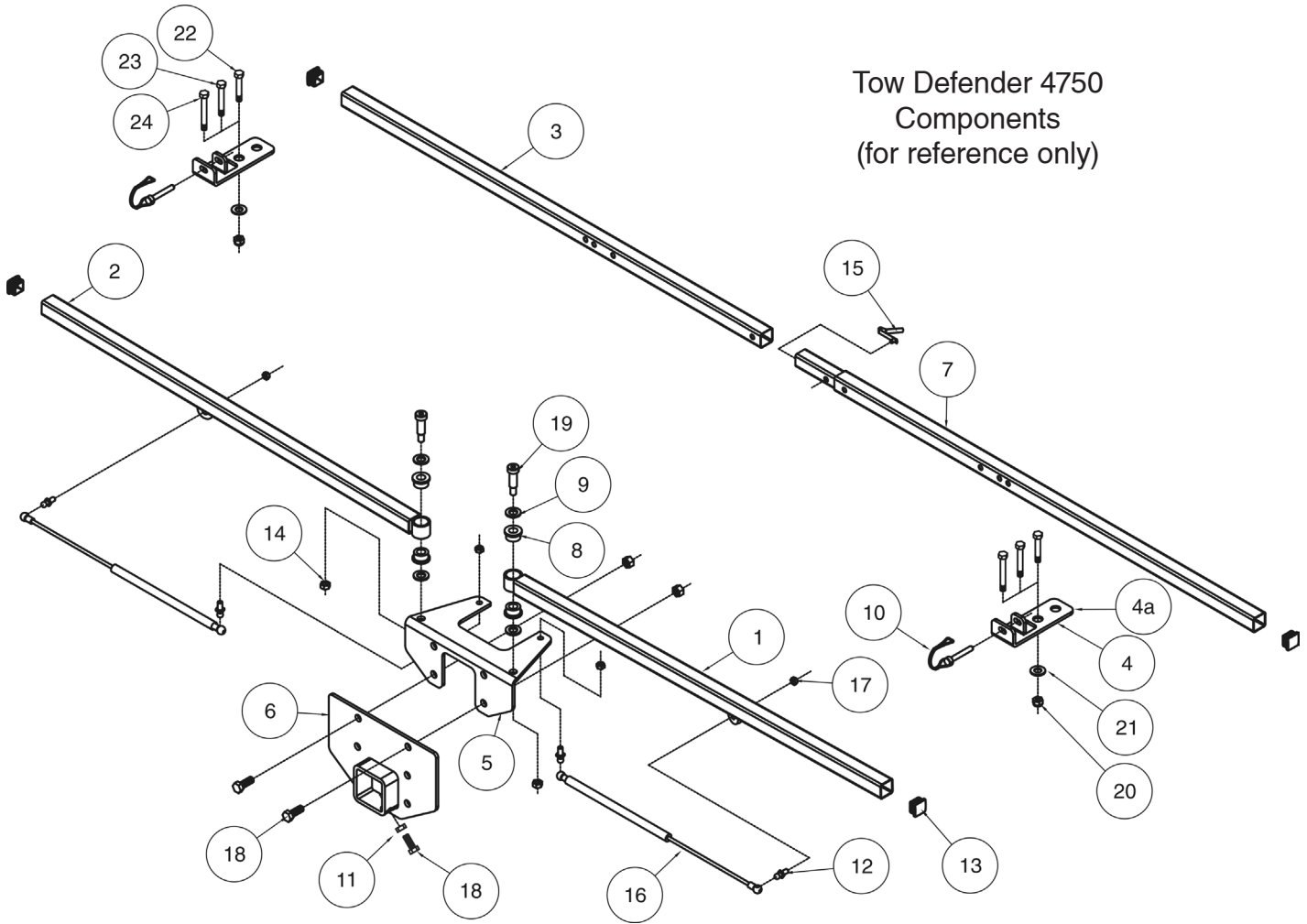


CAUTION

The shoulder bolt adapters reduce clearance between the tow bar and coach. Ensure that they are stored so that they do not contact the coach.

Damage caused by improper storage will not be covered under warranty.

Tow Defender 4750
Components
(for reference only)



Item	Qty	Description	Part number
1	1	Driver side tube	501301-00
2	1	Passenger side tube	501301-10
3	1	Female support tube	A-002641
4	2	Shoulder bolt adapter	B-001574A
4a	2	optional 2" extended shoulder bolt adapter (not shown)	4750-02
5	1	Collar	B-001174
6	1	Collar bracket	C-001708
7	1	Male support tube	C-001709
8	4	Poly bushing	200375-00
9	4	1/2" I.D. x 1" O.D. flat washer	350309-80
10	2	Safety pin	356997-00
11	1	3/8" jam nut	350254-40
12	4	Ball joint	200024-00
13	4	Plastic plug	200142-00
14	4	3/8" lock nut	350272-00
15	1	Spring button	200699-00
16	2	Gas strut	
<p><i>Note: two different gas struts have been used to manufacture the Tow Defender. You must measure to determine the appropriate gas strut:</i></p> <p>200023-50 – overall length: 20 1/2"</p> <p>200023-60 – overall length: 21"</p>			
17	4	5/16" lock nut	350253-01
18	2	3/8" x 1" bolt	350055-00

Item	Qty	Description	Part number
19	2	1/2" x 1 1/4" shoulder bolt	350094-50
20	2	1/2" nylon lock nut	350259-00
21	2	1/2" flat washer	350308-00
22	2	1/2" x 2 1/2" bolt	350099-00
23	2	1/2" x 3" bolt	350101-00
24	2	1/2" x 3 1/2" bolt	350103-00

Not Shown
Tow Defender fabric – part number 4750-10

Velcro straps (4)
(Replacement Velcro straps, set of 2 – part number 4700-2)